

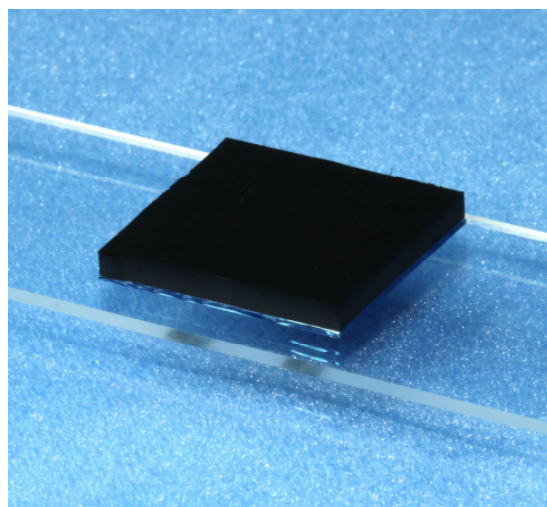
## Multi-Walled Carbon Nanotube Array

### ◆ Features

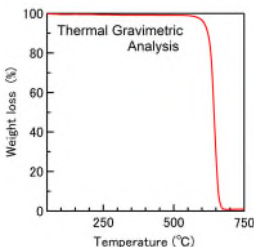
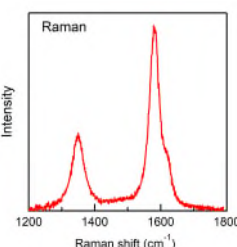
Multi-walled carbon nanotubes are densely aligned vertically on a substrate. We offer long multi-walled carbon nanotube arrays ranging from several hundred  $\mu\text{m}$  to 3 mm in length. NTAD is a dry spin-capable product that can draw out CNT webs where CNTs are aligned in one direction. NTAD is shipped with the web drawn out from the substrate edge.

### ◆ Application

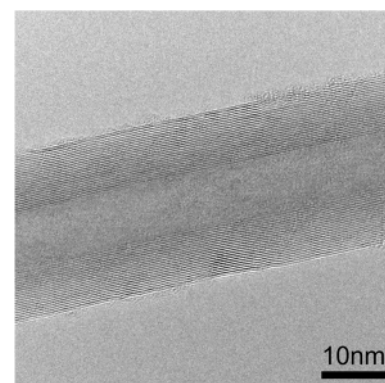
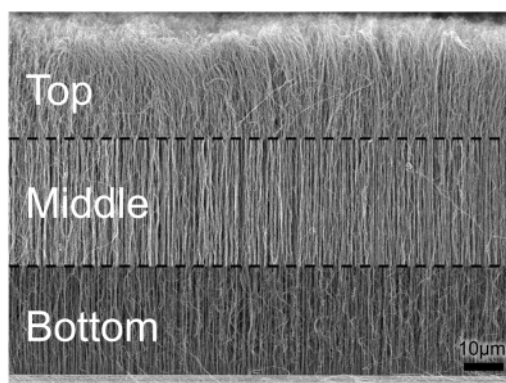
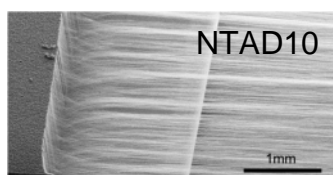
Thermally conductive materials / Heating elements /  
Light absorbing materials / Electromagnetic shielding /  
Functional resin molded products / Lightweight structural materials / Dispersions, etc.



### ◆ Specifications

SKU	CNT Length (mm)	Spinnability	Substrate size (mm)	Purity (%)	Other characteristics
NTA05	$0.5 \pm 0.1$	-	20 x 20	> 98	Array direction : Vertical CNT diameter : 10 ~ 40 (nm) CNT areal density : 30 ~ 300 ( $\mu\text{m}^2$ ) Specific surface area : 50 ( $\text{m}^2/\text{g}$ )  
NTA10	$1.0 \pm 0.1$	-	20 x 20	> 98	
NTA15	$1.5 \pm 0.15$	-	20 x 20	> 98	
NTA20	$2.0 \pm 0.2$	-	20 x 20	> 98	
NTA25	$2.5 \pm 0.25$	-	20 x 20	> 98	
NTA30	$3.0 \pm 0.3$	-	20 x 20	> 98	
NTAD10	$1.0 \pm 0.5$	YES	10 x 20	> 98	

※ Sales unit : 1 pce ~



### Hamamatsu Carbonics Corporation

319 Hi-cube, 3-1-7 Wajiyama, Chūō-ku, Hamamatsu 432-8003

TEL +81-53-415-8085 FAX +81-53-415-8095

E-mail : info@hamanics.com

Scan to discover !

